



iBlue

Smart Gate

Opener

User Guide

Congratulations for having purchased the iBlue Smart Gate product. Please read this User Guide carefully before installing and starting to use the product.

The product package includes 1 iBlue Smart Gate opener, 1 plastic card including the PUK code and 1 User Guide. Should any of these be missing from the package, please immediately contact the distributor by using any of the contact details that are outlined on the website of the product.

All trademarks and markings indicated in this User Guide are exclusively owned by their proprietors.

General information

The iBlue Smart Gate device is a supplementary tool for smartphones to control electronic doors, gates, and barriers.




The iBlue Smart Gate device has one relay output. This output is connected to the control input of the central electronics of the door/gate mover equipment.

The relay output can operate in 2 ways: in impulse mode (mono-stable) or in constant on / off state (bi-stable).

The device has an external low-voltage power supply, preferably the one from the connected control panel. If not, then an external power supply unit must be provided with the adequate voltage range, indicated in the technical specifications. The iBlue Smart Gate power supply input is polarity-independent.

The iBlue Smart Gate complies with applicable standards and normative documents and is equipped with the **CE** conformity marking. The full conformity declaration is available at the following website: www.iblue.eu

The sign  (crossed dustbin) means that within the European Union, the product must be recycled. Please do not dispose the product as household waste. List of chemicals used in the production of the device is available at the following website: www.iblue.eu

Installation guide

ATTENTION!

The device must be installed by a qualified electrician or a person/company, that fitted your electronic door/gate/barrier. Please make sure the serial number remains intact and legible. The manufacturer and distributor of iBlue Smart Gate are not liable for any damage caused by incorrect, improper or unprofessional installation.

Before installing iBlue Smart Gate, please study the User Guide of your main access control unit, with particular attention to the chapter on accessory connections, and compare it with this User Guide and the connection drawing therein.



The device should be installed as close as possible to the entry zone and as far as possible from metallic elements as they negatively affect the transmission distance of Bluetooth® signals. The device can be used both indoors and outdoors. In case of outdoor use, the device must be fitted below a weatherproof protective cover. Wiring connections (connection diagram) and the technical specifications of the device can be found at the end of this User Guide. The device should be installed at a height of min. 1.5 meters above ground level.

The iBlue Smart Gate opener must be connected to the appropriate points according to the connection diagram, with the power source turned off.

WARNING!

Risk of injury due to unintended gate motion

After the device had been fitted, the iBlue Smart Gate emits an output impulse that will open your gate/barrier, in case the power is turned on. Bare in mind the unexpected gate motion or make sure that the device is fitted before the relay output is connected (See the section on iBlue Smart Gate operation).

iBlue Smart Gate operation

The device is operated by smartphone. The required application, **iBlue Smart Key** is available in the App Store for iOS operating systems. Download it from Google Play™ for Android™, and from Windows Store™ for all Windows™ systems. The **iBlue Smart Key** application is easy to use just follow the instructions.



IMPORTANT!

The product can only be operated by the **iBlue Smart Key** application. The manufacturer and distributor of iBlue Smart Gate are not liable for any errors or damage operation otherwise or by the use of any harmful code.



In the packaging there is a plastic card, containing a personal PUK code included. The PUK code can be found under the scratch-off part, in a readable form and in a QR code format. In case of registering the product online, the PUK code can be accessed electronically later on. In the absence of your own smartphone or PUK card, this is the only way the device can be operated as you can query the PUK code of the previously registered product.

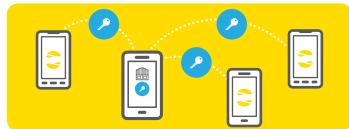
IMPORTANT!

Please keep the plastic card with the PUK code at a safe place to prevent it from unauthorized access. The manufacturer and distributor of iBlue Smart Gate are not held liable for damage of unauthorized access to the card.

The PUK code must be entered at first use. After the first successful connection, a new virtual key is generated in the **iBlue Smart Key** mobile application for our iBlue Smart Gate device.

This virtual key generated in the application can be shared with other users. A key can only be withdrawn if there is a Bluetooth® connection between the **iBlue Smart Key** mobile application and the device.

In order to unauthorized some shared access, select the appropriate menu item in the **iBlue Smart Key** application, then change/alter your list of access accordingly.

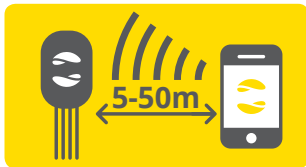
**IMPORTANT!**

Please do not share the virtual key with unauthorized persons. The manufacturer and distributor of iBlue Smart Gate are not held liable for damage by shares to unauthorized persons.

Communication between the **iBlue Smart Key** smartphone application and the device is encrypted. Strength of encryption is 128 bits.

iBeacon compatibility

The iBlue Smart Gate supports the Apple® **iBeacon™** standard. When approaching the iBlue Smart Gate, notification of the application on the iOS™ operating system automatically appears on the display of your phone, provided that you have enabled this function in the setting for automatic notifications of virtual keys.



Operational radius

Depending on the location and line of sight of the device, the operational distance of the integrated Bluetooth® radio can vary between 5 and 50 metres.

Areas of use of iBlue Smart Gate

The iBlue Smart Gate can be preferably used together with the following access control solutions: Garage gate and gate opener automatics control • Industrial

gate control • Remote control of barrier and parking systems • Automatic door control • Electromagnetic lock systems control • Accessory for admission systems • Other solutions: The iBlue Smart Gate is suitable for other connection tasks as long as the power supply and the operating conditions comply with the ranges indicated in the specifications.

The iBlue gate opener is compatible with all devices using iOS™ 8.0 (or newer), Android™ OS 4.3 (or newer) or Windows Phone™ 8.1 update 1 (or newer) operating systems and having Bluetooth® 4.0 wireless technology.

ATTENTION!

Should you have any questions concerning the iBlue Smart Gate, its installation or use, please contact the distributor by using any of the contact details that are outlined on the website of the product.

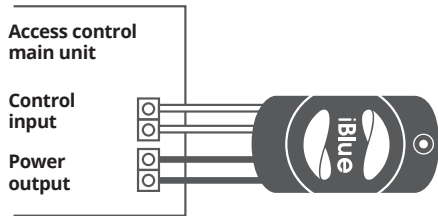
Please always use the iBlue Smart Gate with caution and keep safety in mind. The iBlue Smart Gate is not qualified as a security device and cannot protect your property, therefore the manufacturer and distributor of iBlue Smart Gate are not responsible for any violation of protection of your personal assets.

The manufacturer and distributor of iBlue Smart Gate are not held liable for any defects caused by use or operation other than specified in this User Guide, improper use, unprofessional installation, operation repair and transformation, unauthorized intervention, inadequate storage, external impacts, (e.g. overvoltage, lightning), environmental effects (chemical impacts, e.g. acid rain, scale, etc.), irregular environmental conditions (e.g. discoloration due to freezing or harmful solar radiation), disaster or otherwise not listed as above after purchase, and for any damage arising therefrom.

Technical specifications

Operating voltage range	10-35V DC, 9-24V AC
Temperature range	-40°C - +85°C
Max. current consumption (@24V)	45 mA
Number of switched outputs	1
Switched output type	unfused relay output (NO)
Max. load current of switched output	1A@24V DC, 0.5A@125V AC (resistive load)
Max. switched voltage	125V AC, 60V DC
Short-circuit protection of power input	fuse (0.2A)
Dimensions	39.5x74x20 mm
Wireless communications interface	Bluetooth® 4.0 LE
Radio signal carrier frequency	2.4GHz
Radio signal intensity	+3 dBm

Connection drawing



The descriptions and illustrations in this User Guide are subject to change. The manufacturer reserves the right to effect any modifications deemed to be required for the technical, manufacturing and commercial development of the product, while leaving basic product features unchanged, and is allowed to do so at any time without modifying this documentation.

Control your security with a single tap